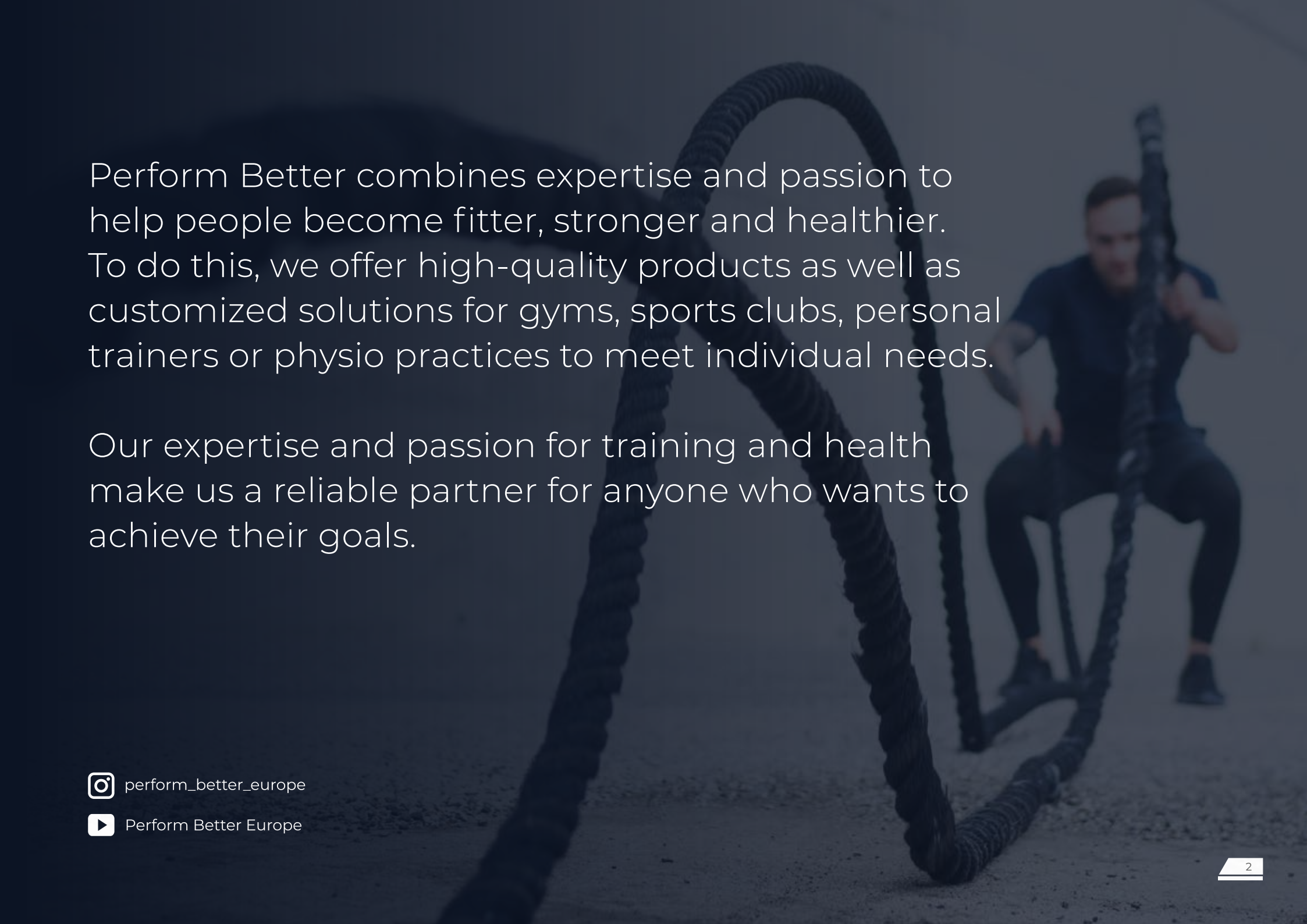



**PERFORM
BETTER**


FLOORING



Perform Better combines expertise and passion to help people become fitter, stronger and healthier. To do this, we offer high-quality products as well as customized solutions for gyms, sports clubs, personal trainers or physio practices to meet individual needs.

Our expertise and passion for training and health make us a reliable partner for anyone who wants to achieve their goals.

 [perform_better_europe](#)

 [Perform Better Europe](#)

PB FLOORING



Turf

4



Connect

8



Standard

11



Rollware

14



Outdoor

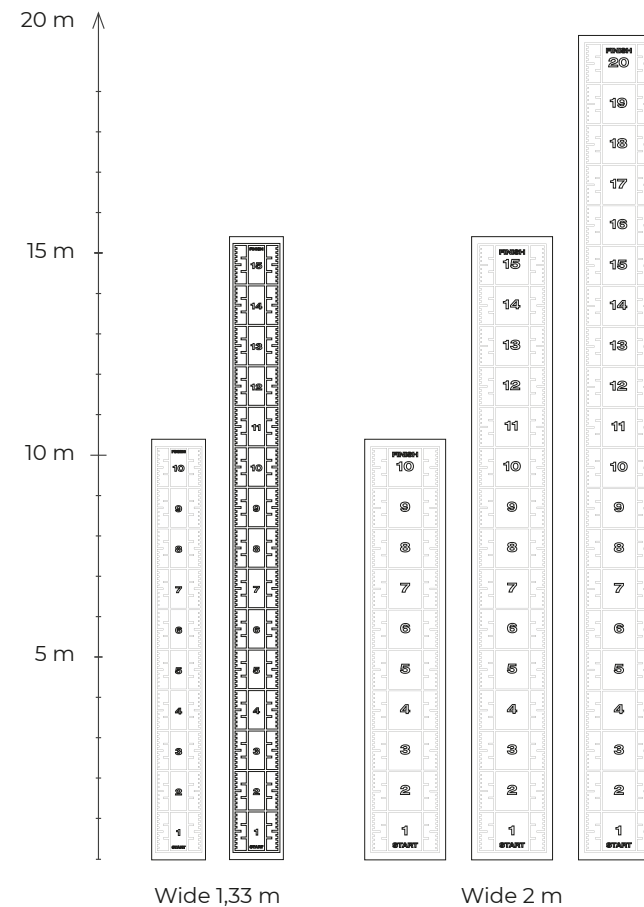
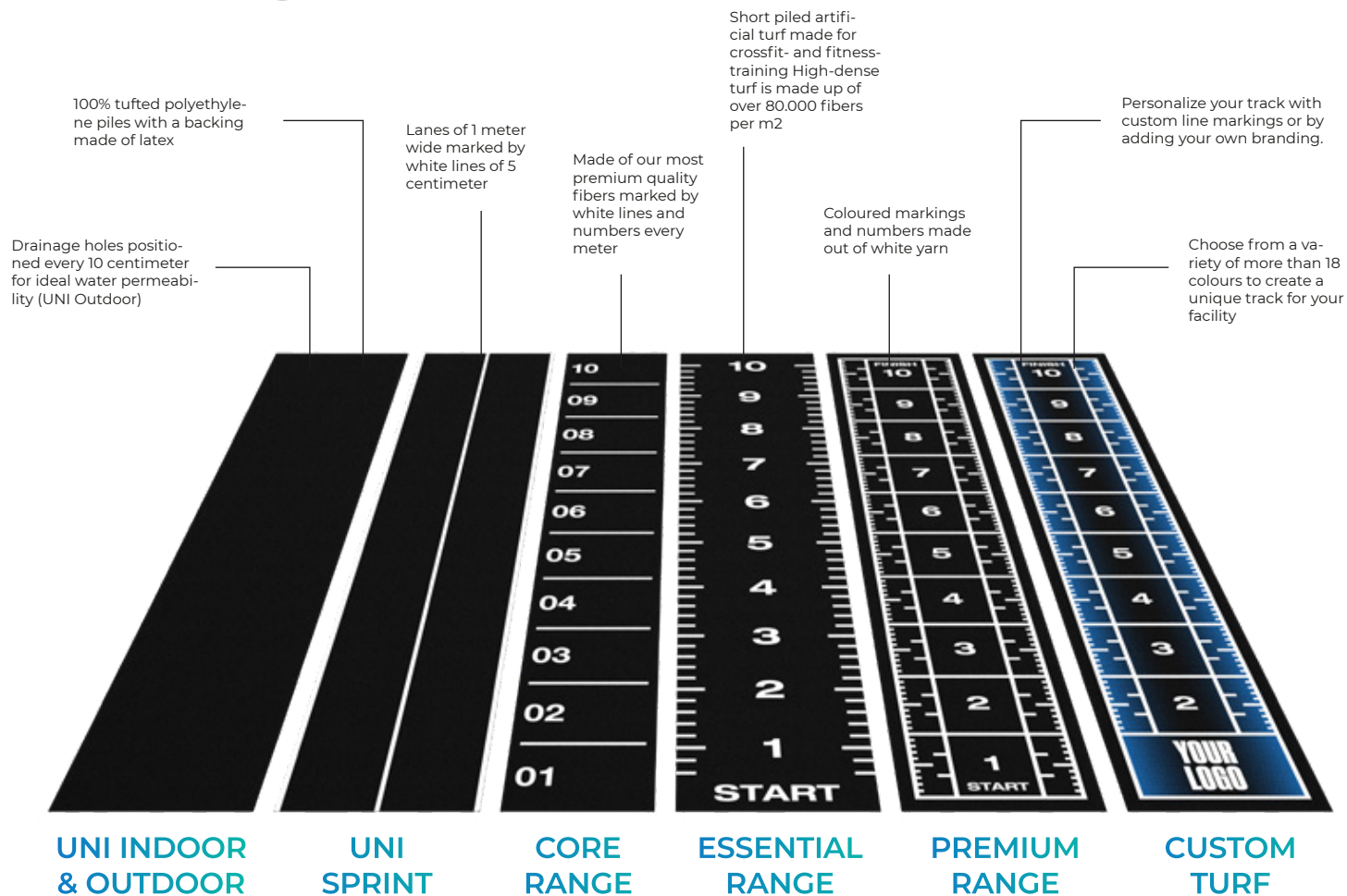
16



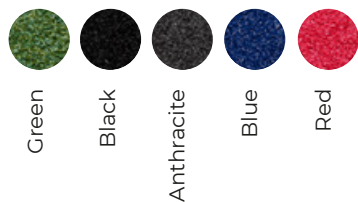
Puzzles

18

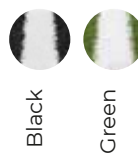
TURF



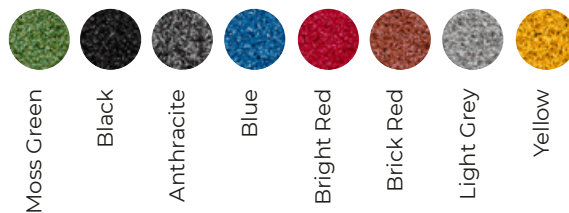
UNI INDOOR



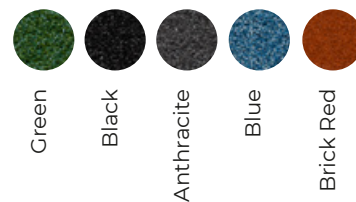
UNI SPRINT



UNI OUTDOOR



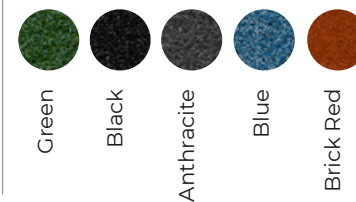
ESSENTIAL RANGE



CORE RANGE



PREMIUM RANGE





CUSTOM TURF

STEP 1

SHARE YOUR VISION. WE MAKE IT COME TRUE!

Describe your idea to us in as much detail as possible and we will transform your vision into a custom turf within 24 hours! Do you have specific ideas, how the markings should look like?

Should we put a START or FINISH lettering at the beginning or end of your lawn?

STEP 2

CATEGORY A:

For example, you can choose any two colors from Category A, at no extra charge:



White



Moss Green



Black



Anthracite



Blue



Brick Red

CATEGORY B:



Off-White



Light Grey



Aqua Blue



Sky Blue



Lime Green



Yellow



Orange



Bright Red



Pink



Purple



Gold



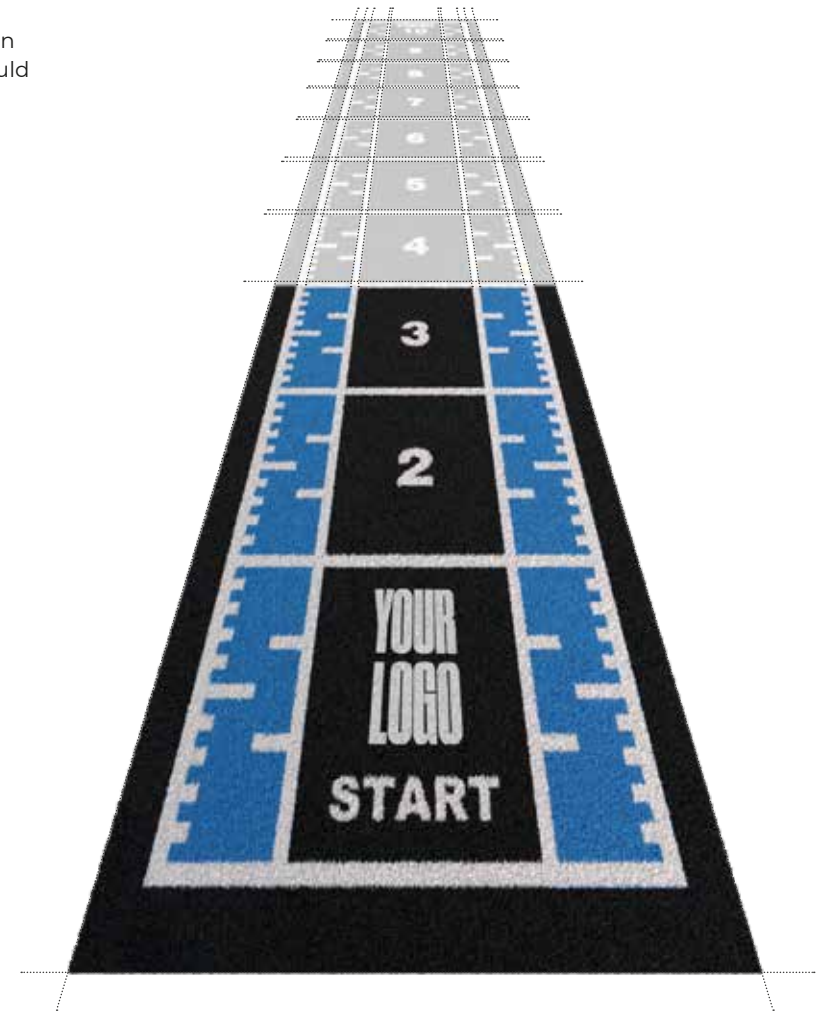
Choco Brown

You can choose up to 6 colors per lane, should you need more than 2 colors from the category A or at least one color from category B, an extra charge will be made. Surcharge – see price calculator in our price list.

STEP 3

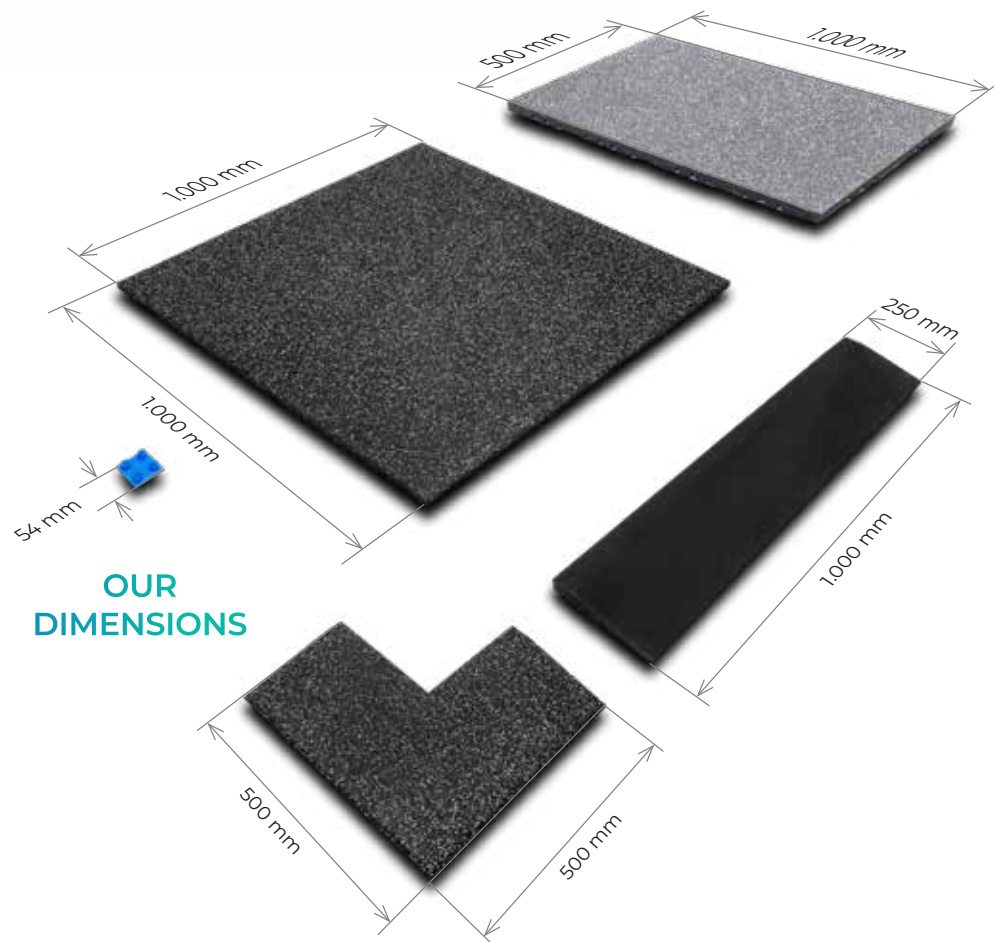
Send your design request to sales@perform-better.de

Send a clear sketch by e-mail (a photo with your cell phone, a PowerPoint or Excel file) and attach your personal branding or Logo as a vector file (.pdf, .ai, .eps, .svg.). In addition, a floor plan helps for an overall impression and concrete planning.





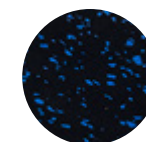
CONNECT Tiles



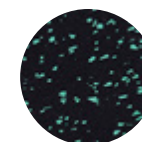
**OUR
DIMENSIONS**

WIDE PALETTE OF COLORS

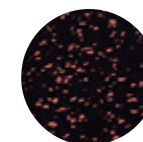
20 mm Thickness



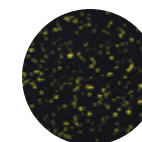
15% Blue



15% Green



15% Red



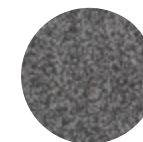
15% Yellow



Beach



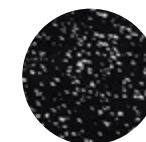
Desert



Stone



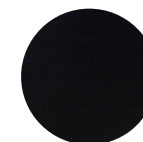
Granite



15% Light Grey

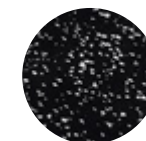


15% Dark Grey



100% Pure Black

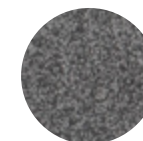
30 mm Thickness



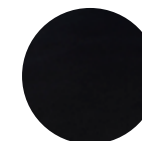
15% Light grey



15% Dark Grey

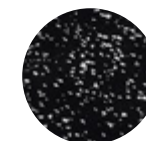


Stone

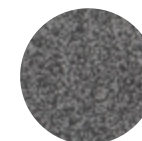


100% Pure Black

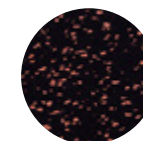
40 mm Thickness



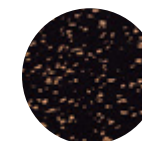
15% Light Grey



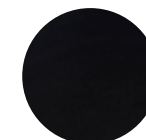
Stone



15% Red



15% Orange



100% Pure Black

CONNECT (TILES)

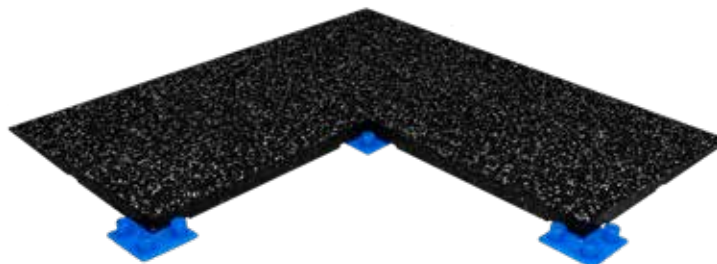
The fitness tiles are easy to install with the help of the plug-in system, gluing is not required. The edges can be covered with a stainless steel or aluminum profile. can be covered.

The tiles can be easily cut to the right size with a hand knife, although we recommend the use of carpet knives (cutters). Use a Rubber mallet to close the joints.

THE CONNECTION SYSTEM

A „connector“ (connector) is placed every 20 centimeters, resulting in an average use of 5 connectors per meter. This and the fact that our connectors are made of polypropylene, ensures that the tiles stay perfectly in place after connecting.

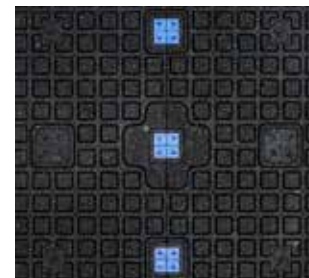
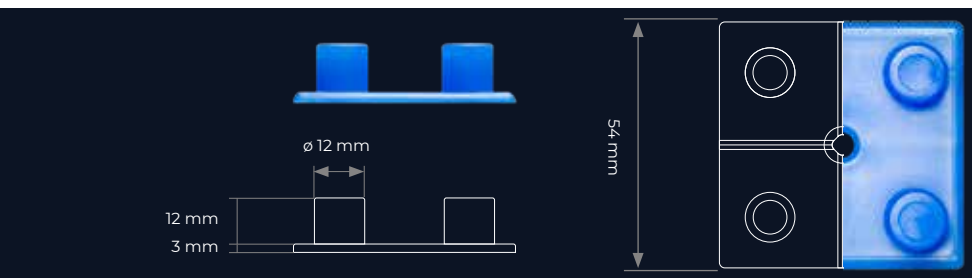
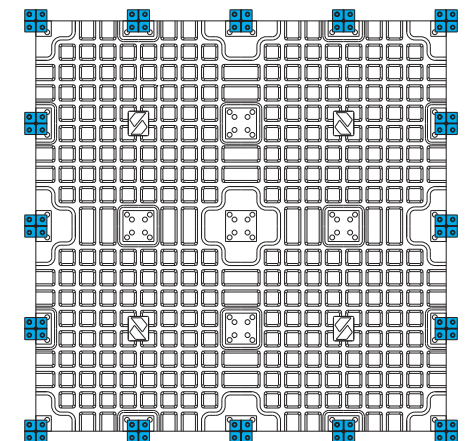
The result is a phenomenal, free-floating system that can be installed without the need for adhesives or other complicated installation methods.



SIDE VIEW + CONNECTORS



VIEW FROM BELOW + CONNECTORS



ADVANTAGES



EASY TO CLEAN



EASY TO INSTALL



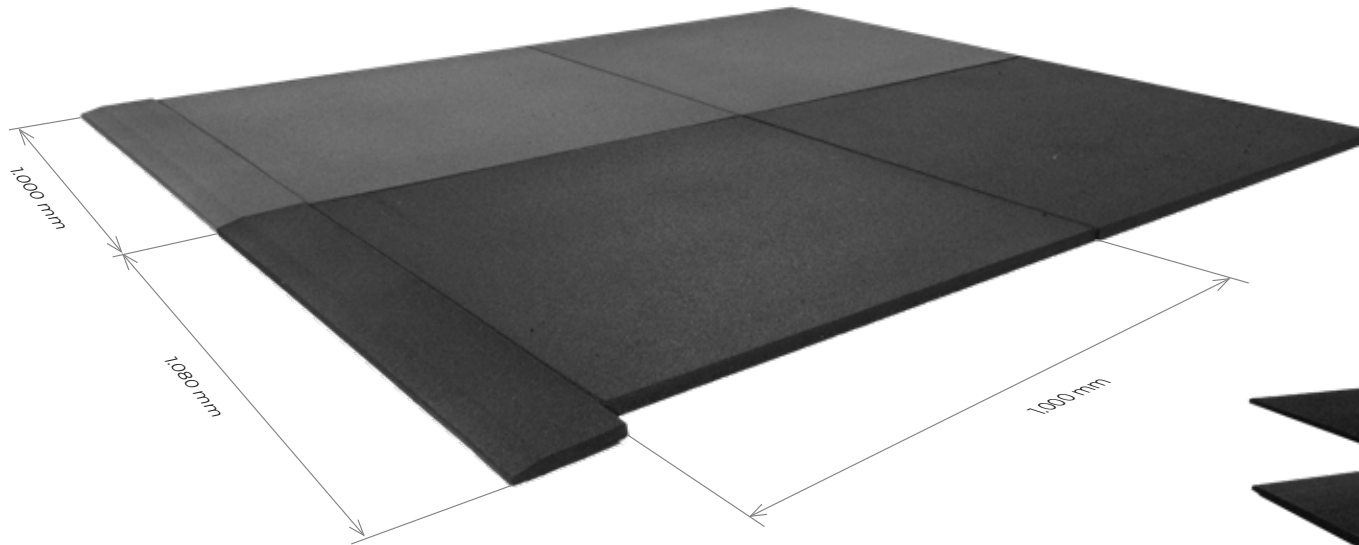
COMPREHENSIVE 5-YEAR WARRANTY



ACOUSTICAL QUALITIES



STANDRARD Tiles



The highly shock-absorbent recycled rubber fitness tiles are manufactured and designed for any open space and/or functional area. The standard rubber tile has a 2-layer system; the bottom layer is made of coarse granules and the top 5 mm layer is made of finer granules. These tiles are manufactured in the EU and are made exclusively from recycled European car tires, which are bound with PU. Due to the exclusive use of high quality raw material, our standard tiles are almost odorless, which makes them suitable even for small, enclosed spaces.

Our new hygiene-only addition to the standard tile range offers additional protection against the spread of bacteria and viruses.

OUR COLOURS

Black



20 mm

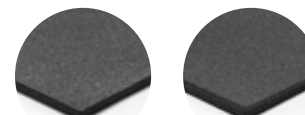
30 mm

43 mm

53 mm

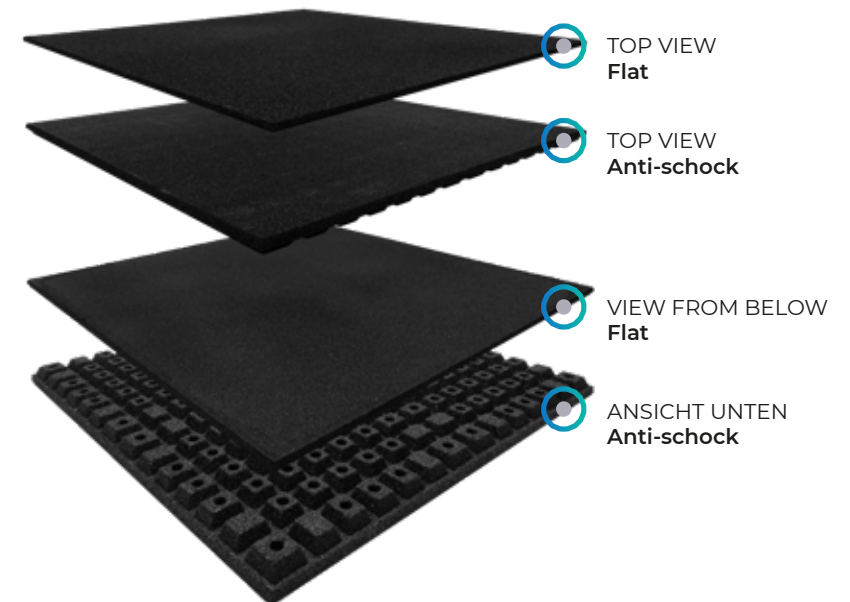
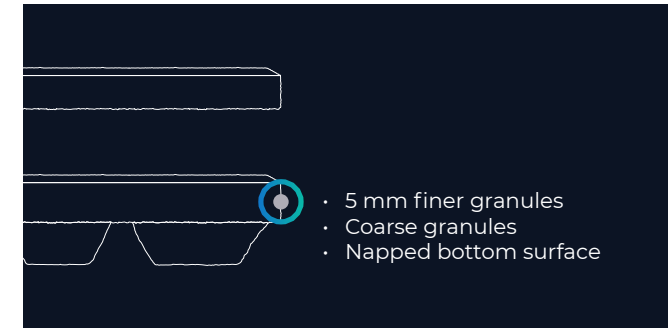
63 mm

Gray

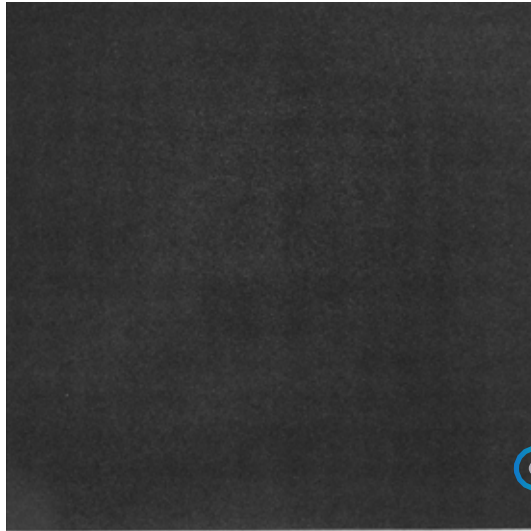


15 mm

20 mm



THE UNDERSIDES



FLAT

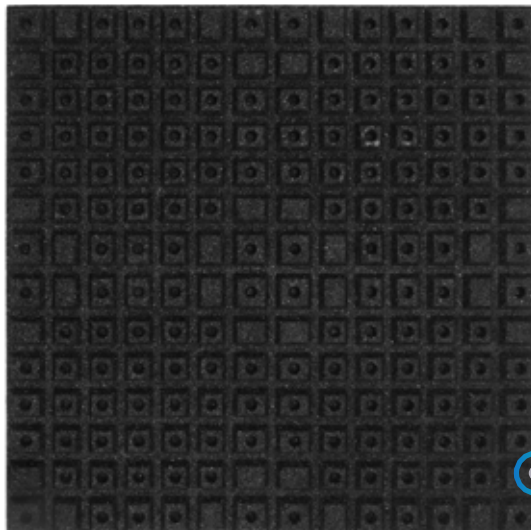
A completely flat surface that offers excellent available thicknesses offers excellent durability.

AVAILABLE THICKNESSES

- 11 mm
- 15 mm
- 20 mm
- 30 mm



Fig.: Standard tile/flat/black - 1,000 x 1,000 mm



ANTI-SHOCK

Our anti-shock floor is designed to absorb even more sound (for example, impact sound).

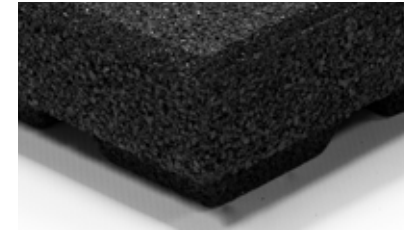
AVAILABLE THICKNESSES

- 43 mm
- 53 mm
- 63 mm



Fig.: Standard Tile/Anti-Shock/Black - 1,000 x 1,000 mm

ADVANTAGES



HIGH DENSITY



MADE IN EUROPE



100% RECYCLED RUBBER USED



ODORLESS



PERFORM
BETTER

PRIVAT

ROLLING RUBBER

The rolled goods are made from predominantly recycled black rubber particles from truck tires - the colored versions have a variants have a proportion of new EPDM. As a result of the exclusive use of tires, this flooring has a very fine, smooth surface. surface.

Our highly compact and maximally robust rubber floor covering is immune to moisture and water, elastic, impact sound absorbing and is suitable for a wide range of applications:

Exhibitions, trade shows and exhibition stands, fitness centers, Crossfit-Boxes, recreation rooms, sports centers, dressing rooms, ice rinks, mountain resorts, shooting ranges, horse transport, rooms of of golf courses, etc.



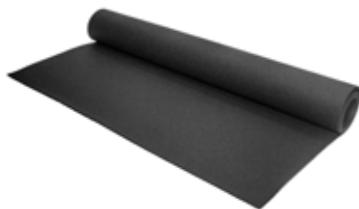
OUR COLOURS

PURE BLACK

SBR rubber granulate bonded with PUR

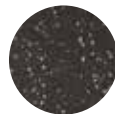


black



FIVE

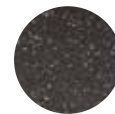
95 % SBR and 5 % EPDM rubber granules, bonded with PUR



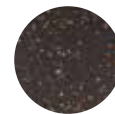
grey



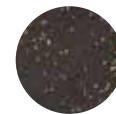
blue



lila



orange



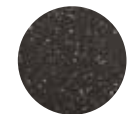
yellow



red



samba



stars

DENSITY

Our rolling floors are available in a thickness suitable for any purpose. From 4 mm up to 14 mm in 2 mm increments.

Our standard roll width is 1.25 meters.



4 mm

Cardio training, spinning, physiotherapy, yoga, exhibition, substrate protection etc.



6 mm

gym, aerobics, shooting range



8 mm

Functional training, martial arts



10 mm

Ice skating rink, mountain/cable car station, ski rental, free weight areas middle weights



12 mm

Free weight areas heavyweight, CrossTraining



14 mm

ADVANTAGES



HIGH DENSITY



MADE IN EUROPE



100% RECYCLED RUBBER
USED



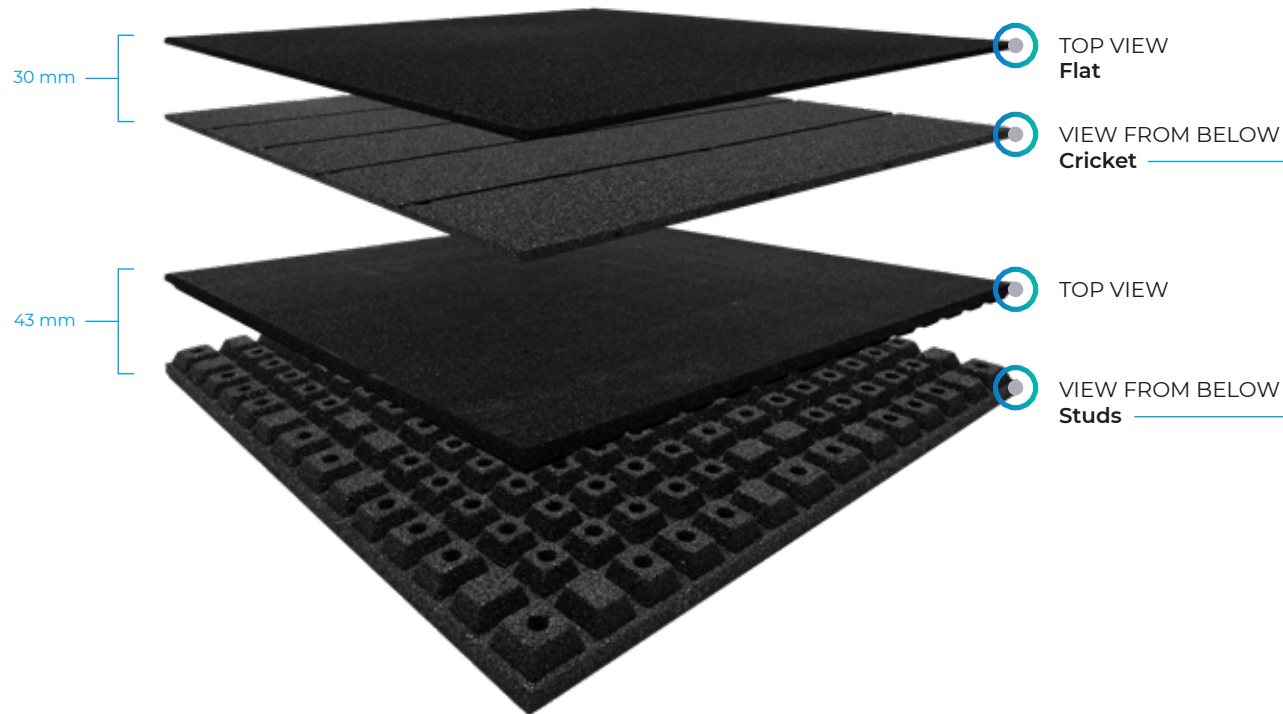
ODORLESS



OUTDOOR Tiles

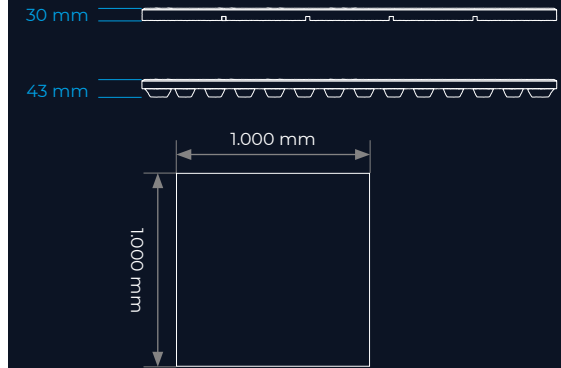
The highly shock-absorbent recycled rubber fitness tiles are manufactured and designed for each Open space and/or functional area manufactured and designed. The standard rubber tile has a 2-layer system; the bottom layer is made of coarse granules and the top layer of 5 mm, consists of finer granules.

These tiles are manufactured in the EU and are made exclusively from recycled European car tires, which are bound with PU. The two different floor structures are specially designed to channel (rain) water through and away from the training area.



DIMENSIONS

All outdoor fitness plates are 1 x 1 meter in size. They are available in available in thicknesses of 30 and 43 mm.



An almost closed floor surface with strategically placed drainage channels that give these variants excellent durability and ease of use.

Our studded floor is designed to withstand the toughest wear and tear while ensuring water drains efficiently through the many openings.

THE PEN SYSTEM

A pin hole is placed every 25 centimeters, resulting in an average of 4 pins per meter. This keeps the interconnected tiles firmly in place. This results in a phenomenal free-floating system that is achieved without glue or other complicated installation methods.

To visually minimize expansion and contraction of the tiles due to weathering we recommend closing the tile seams with an MS polymer adhesive.

CONNECTIONS

Our outdoor fitness tiles are easy to install with the pin connector system, no adhesive is required. The edges can be covered with a stainless steel profile. The tiles can be easily cut to the right size with a hand knife, we recommend the use of carpet knives (cutters) for this purpose.

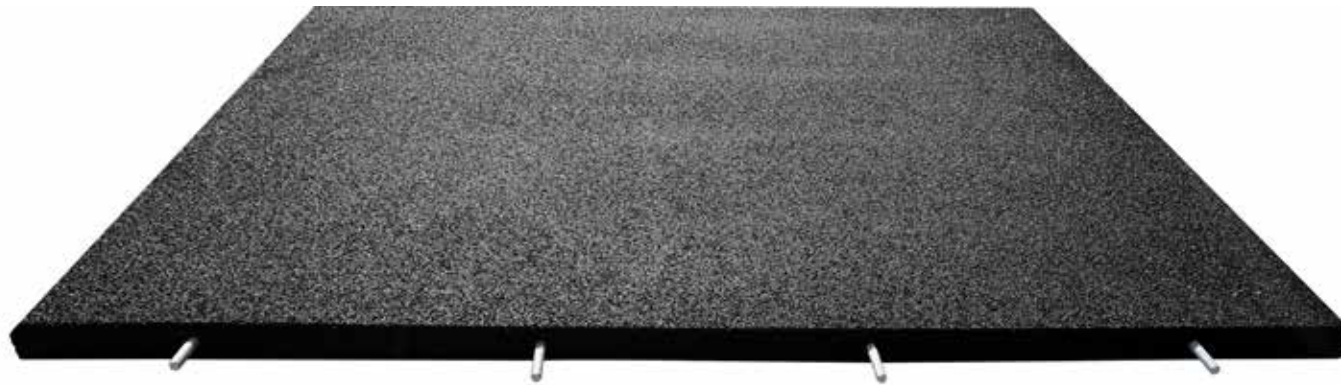
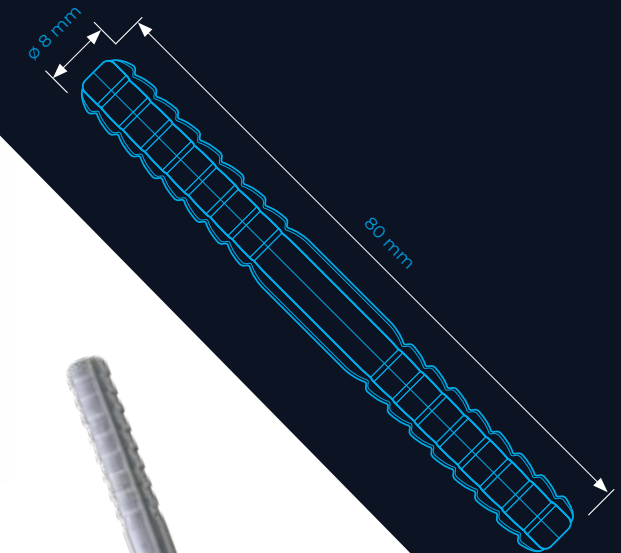
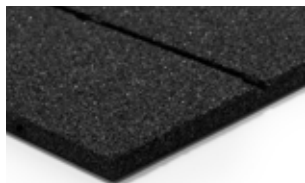


Fig.: Outdoor Fitness Tile - 1.000x1.000x30 mm + PIN CONNECTORS



ADVANTAGES



HIGH DENSITY



MADE IN EUROPE



100% RECYCLED RUBBER
USED

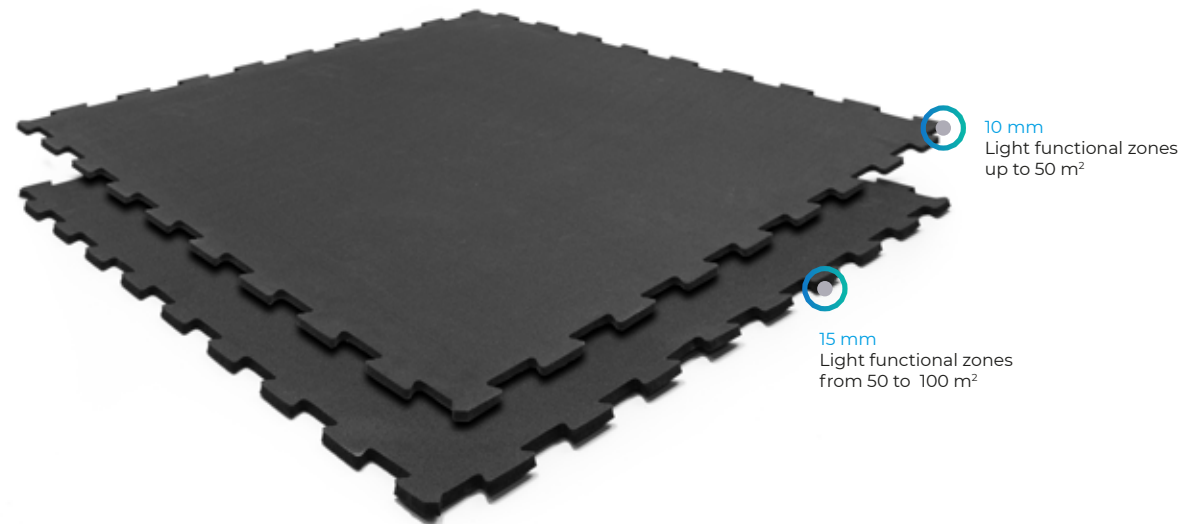


DESIGNED FOR OUTDOOR
USED

PUZZLE Tiles

The Sportsflooring puzzle tiles are made primarily from recycled black rubber particles from truck tires. the colored variants have a proportion of new EPDM in the a proportion of virgin EPDM. As a result of the exclusive of truck tires, this floor covering has a very fine and a very fine and smooth surface.

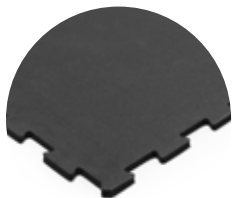
Our highly compact and maximally robust rubber floor covering is insensitive to moisture and humidity, rot-proof, elastic, impact sound absorbing and is suitable for a wide range of applications: Exhibitions, trade shows and booths, fitness centers, cross-training Boxes, recreation rooms, sports centers, dressing rooms, ice rinks, hill stations and many other facilities.



OUR COLOURS

PURE BLACK

SBR rubber granulate bonded with PUR



black

FIVE

95 % SBR and 5 % EPDM rubber granules, bonded with PUR



grey



blue



lila



orange



yellow



red



samba



stars

DENSITY

Our puzzle tiles are available in a thickness thickness suitable for any purpose.

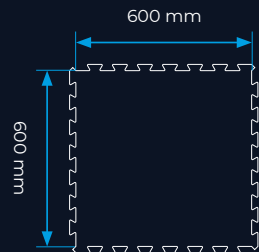
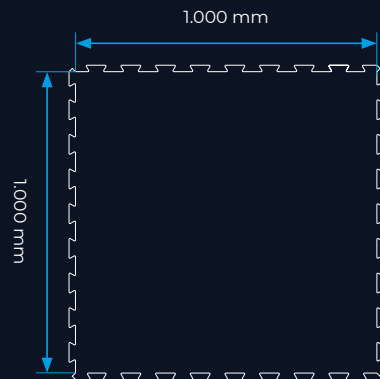
Our standard puzzle dimensions are 60 x 60 cm and 100 x 100 cm.



10 mm



15 mm



ADVANTAGES



INTERLOCKING PUZZLE
SYSTEM



MADE IN EUROPE



100% RECYCLED RUBBER
USED



ODORLESS





PERFORM BETTER

A woman with blonde hair tied back, wearing a black tank top and a smartwatch, is seen from behind in a gym setting. She is making a heart shape with her hands above her head, with her arms raised. The background shows gym equipment like pull-up bars and straps, and the lighting is soft and focused on her.

FTC Functional Training Company GmbH
Perform Better Europe
Balanstr. 73 / D-81541 München

Telefon: +49 (0) 89 4444679-250
E-Mail: info@perform-better.de

www.perform-better.de